



ADVANCED
ASSEMBLY

FIRST PCBS IN A FLASH

Advanced Assembly Customer Success Story:
Playmate Enterprise

TABLE OF CONTENTS

1. Playmate Enterprise

i. Executive Overview

ii. Top Objectives

iii. Resolution

iv. Key Benefits

2. The Birth of Music Mate

3. Development Process

4. PCB Criteria

5. The Results





PLAYMATE ENTERPRISE

"I was surprised at how easy it actually can be to get a board manufactured on a professional level. I thought it would not be cost-effective, but it was. Also, I figured I would have to wait for a long time because I am a small company with a smaller order. However, the turnaround was amazingly fast."

- Curtis Kirk, Chief Executive Officer at Playmate Enterprise

When Curtis Kirk, CEO of Playmate Enterprise was ready to have his company's first professional PCB assembled for its Music Mate product, he thought it would take months from start to finish. Instead, to his surprise, a week from delivering files to Advanced Assembly, he had the working PCB in hand.

Executive Overview

Company Name
Playmate Enterprise

Headquarters
Tyler, TX

Industry
LED Designs

Products
The Music Mate LED Coaster, a set of LED coasters and LED platforms utilizing electronic design

Employees
Less than 10

Website
www.playmateenterprise.com

Partner
Advanced Assembly

The Company's Top Objectives

- Work with U.S.-based partner with credibility in the market
- Be able to place small batch orders
- Affordability without compromising quality
- Have the ability to make changes quickly, if necessary
- Quick-turn service for any size order

The Resolution

Advanced Assembly's quick-turn, PCB assembly service

Key Benefits

- Excellent communication from the start
- Fast turn-time; 2 days faster than requested
- Eliminated frustration of hand assembly
- Design-for-assembly check saved month of debugging time
- Working prototypes help move to next stage of production cycle



THE BIRTH OF MUSIC MATE

The Music Mate, a light-sensitive and sound-reactive LED coaster, was developed as a college electronics project when Curtis was tasked with creating a unique electronic circuit.

Drawing from an experience on a camping trip when a friend held a flashlight to the bottom of a water bottle and it amplified the light, combined with his love for music, the idea hatched. The school assignment progressed using components purchased at a hobby store and, upon completion a provisional patent was filed after research ensured nothing quite like it was on the market.

While the coasters target the entertainment/party market segment, in addition to being able to “see” the sound of music being played, the device can also be used to check for over-modulation for a live music event to make sure that highs, mediums, and lows of sound are adequately represented.

The coaster design separates audio frequencies, representing the frequencies visually using three LEDs per channel.



Operation requires three conditions:

- 1) There must be a glass sitting on the top of the coaster that applies sufficient pressure to initiate use,
- 2) An adequately dark environment for the relay to enable the device to switch to open, and
- 3) Sound to drive a triple-band pass circuit to translate audio into light.

DEVELOPMENT PROCESS

Building prototypes with hobbyist components solidified the design concept. Obtaining components that were tiny enough to put in a small case was a different matter, since most of the components Curtis used to make the prototype were quite large. At this point the objectives for the design became small footprints, performance, and an attractive but affordable product.

In addition to shrinking the design, Curtis also had to scale the LEDs correctly. Initially, the LEDs selected were smaller than required to give off sufficient light. Another obstacle was the power source, necessitating a move from cylindrical-cell batteries to a 9 V battery source.



Figure 1: The Music Mate in operation. The small coaster delivers a powerful visual aspect to music.

All of the components also needed to fit within a 2.5" radius. Given that the original components used were geared toward hobbyists, making the design small enough that it could be manufactured and not just soldered together was problematic.

PCB CRITERIA

With a better understanding of the challenges that would need to be overcome to take the product to market Playmate Enterprise established well-defined criteria with which to conduct its PCB partner search.



Those criteria included:

- An American-based partner
- Sufficient size to be able to handle orders efficiently
- Credibility in the marketplace
- The willingness/ability to fill small batch orders
- The capability to make changes quickly, if necessary
- Affordability without compromising quality

Based on a Google search of PCB manufacturers, contact with several potential



partners was attempted, but, “Disappointingly,” says Curtis, “They’d take my name and number, and I’d never hear back from them.”

Finally, two potential manufacturers were identified that fit the company’s specific criteria. One vendor, however, estimated a cost that was thought to be unrealistically high, given the scale of the project. Advanced Assembly, in comparison, provided not only a cost

basis that the company considered fair; they also exhibited excellent communications from the onset.

“Brad Mahoney, the Regional Account Executive at Advanced Assembly, made it easy. Every time I had a question about a capacitor or an LED or whatever, I got very responsive answers to my questions. He was extremely cooperative. I wasn’t made to feel like I was hassling anybody.”

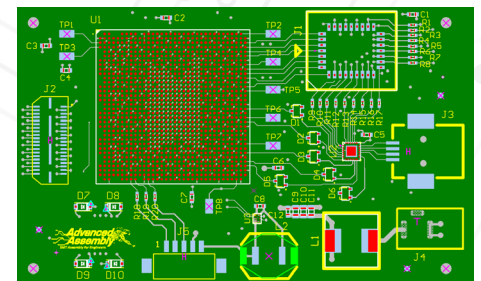
THE RESULTS

Once the circuit was scaled down by TGI Electronics, the files were turned over to Advanced Assembly. After the boards were received, the actual assembly time only took two days, so although the quote indicated a 10-day turn, it was ready and available in just seven days.

“I was surprised at how easy it actually can be to get a board manufactured on a professional level,” said

Curtis. “I thought it would not be cost-effective, but it was. Also, I figured I would have to wait for a long time because I am a small company with a smaller order. However, the turnaround was amazingly fast.”

When asked about the benefits of handing off his design to Advanced Assembly, Curtis had this to say: “I did my work with the hobby-level components to make sure that the design worked. If I had tried to assemble the board myself, it would have been a mess. For a minimal amount of money to not have to go through the frustration that I would have gone through



was invaluable. Also, Advanced Assembly has a unique design-for-assembly check that caught and corrected a few errors for me. This extra benefit saved me months of debugging time.”



THE FUTURE

At this time, Playmate Enterprise is hard at work in the launch-phase of bringing the renamed “Mini Mate” to market, and additional Music Mate designs are on the drafting table.

All products will continue to revolve around the same functionality, but will feature increased input and connectivity options with larger open-source development boards, Bluetooth, and more, all targeting specific applications.

Asked if he would do anything differently regarding PCBs for his next product, Curtis indicated that he would listen to Advanced Assembly’s recommendations and place multiple small quantity orders as needed rather than too many boards at once. “Other than that, no,” he said. “Advanced Assembly provided exactly what I needed.”



Figure 2: The Music Mate "mini" is a 3" coaster that enables users to "see" sound.

"I couldn't have gone to the next level of my design without Advanced Assembly working with me on this, within my budget, and very quickly; it was everything I needed."

ADVANCED ASSEMBLY was founded to help engineers assemble their prototype and low-volume PCB orders and has never strayed from this focus. Based on years of experience within the printed circuit board industry, Advanced Assembly developed a proprietary system to deliver consistent, machine surface mount technology (SMT) assembly 1-5 days. It's our only focus. Advanced Assembly is the original and industry-defining quick-turn PCB Assembly service. We have assembled over 40,000 unique designs in the last decade and we're always looking for more. We take the hassle out of PCB assembly and make it easy, so you can spend time on other aspects of your design.

